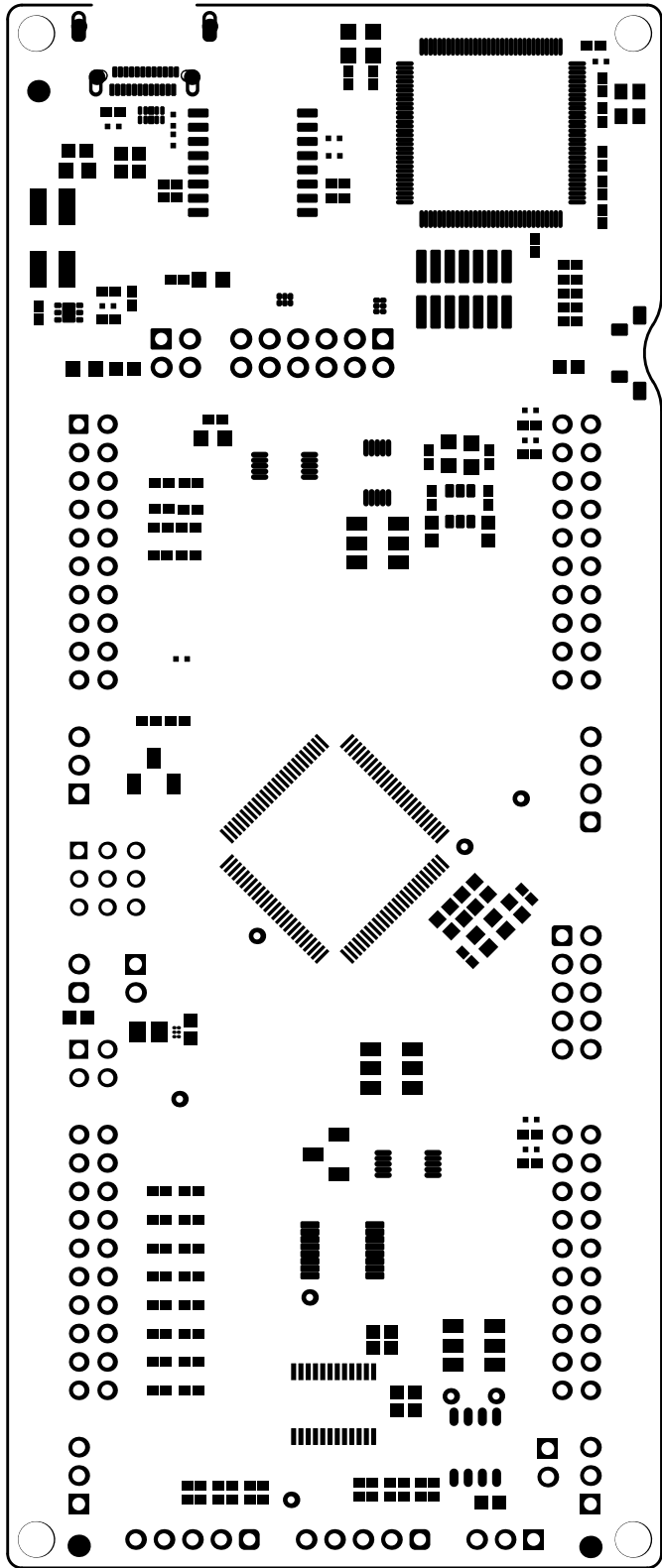
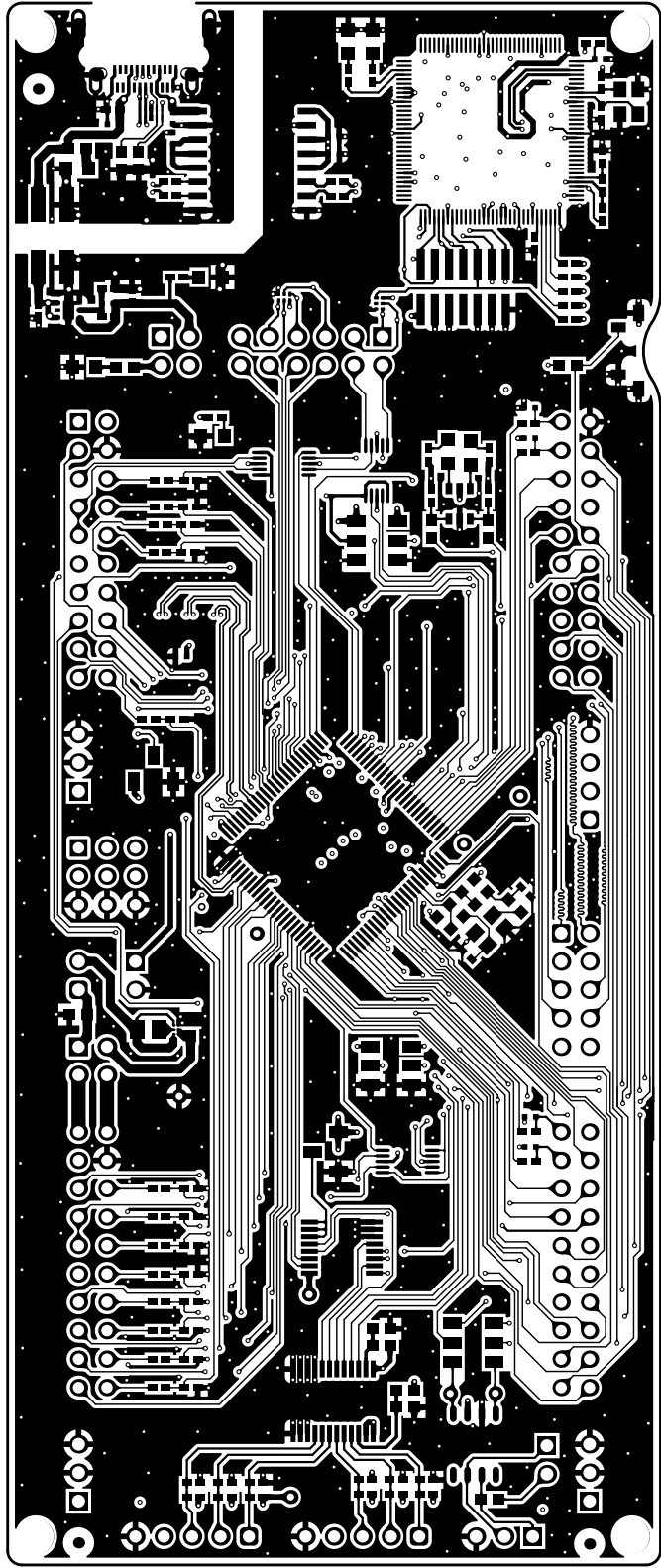


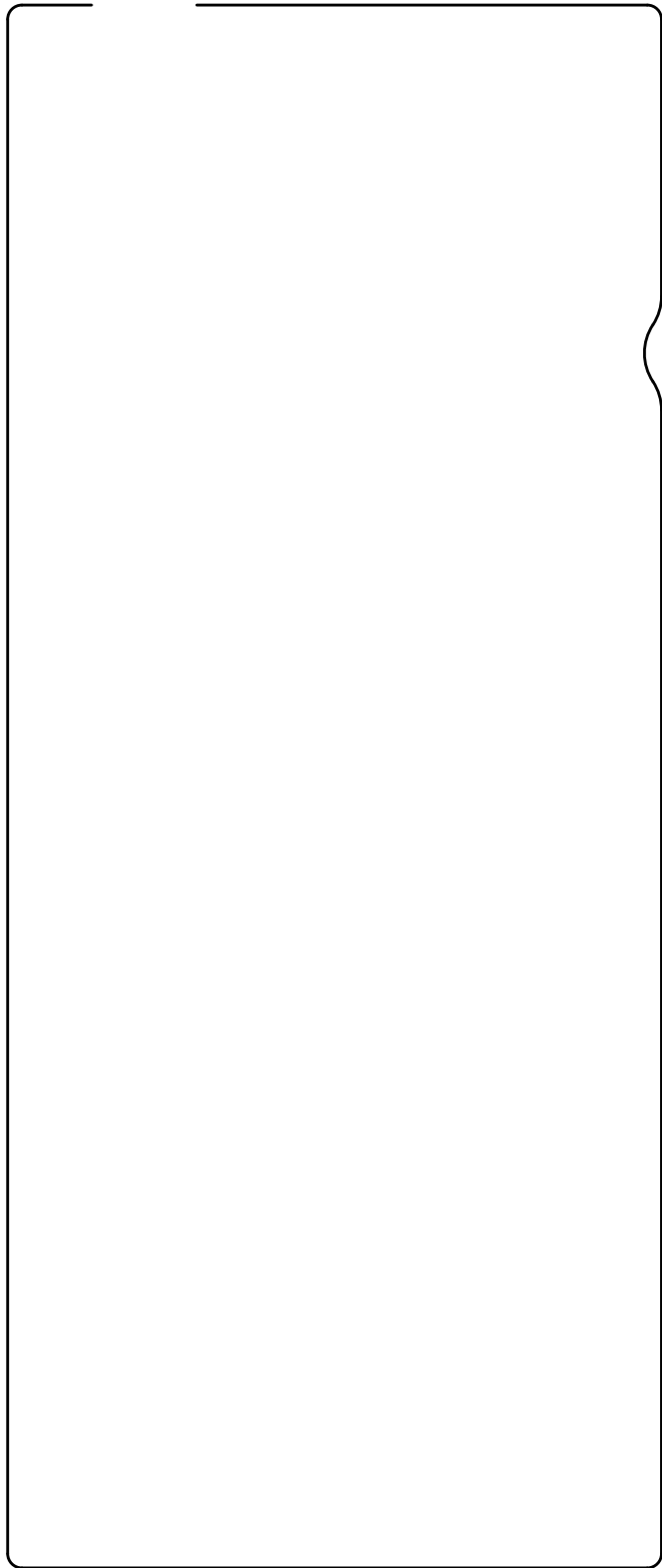
Top Overlay

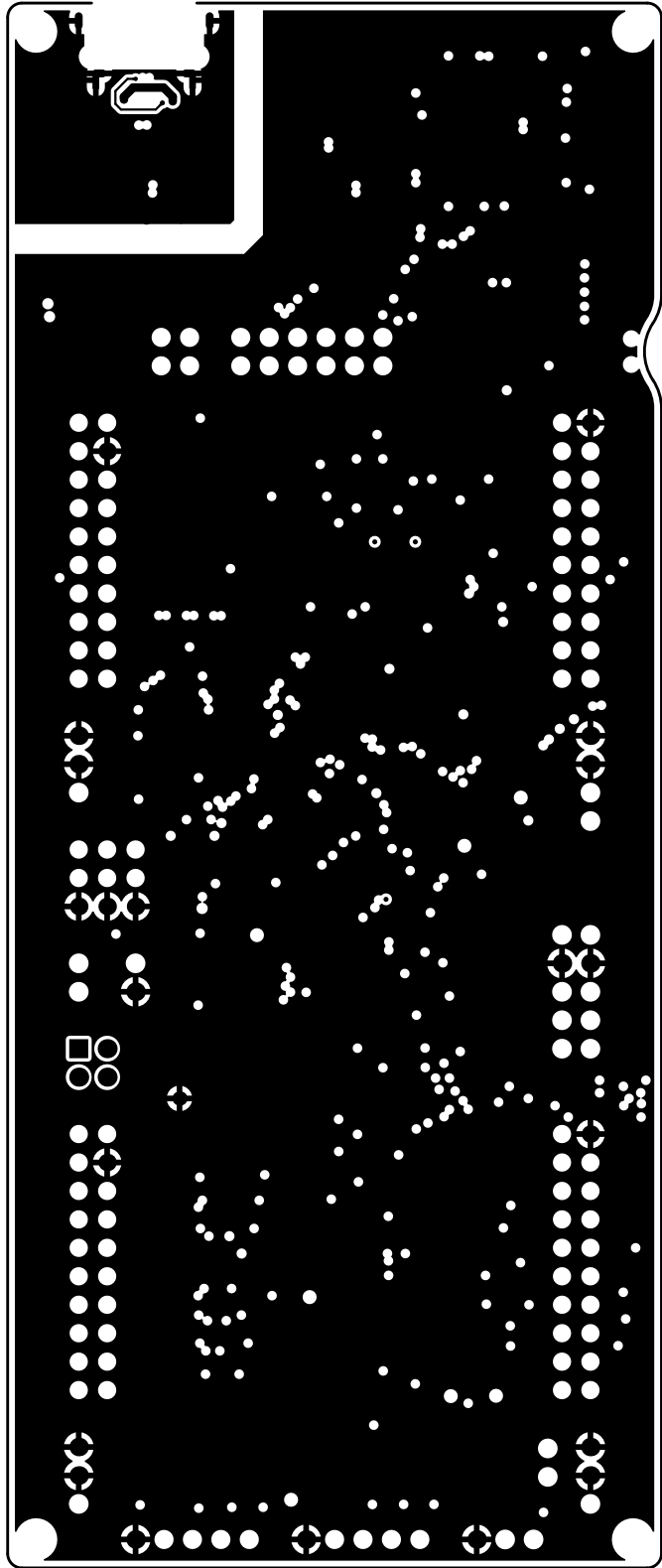


Top Solder

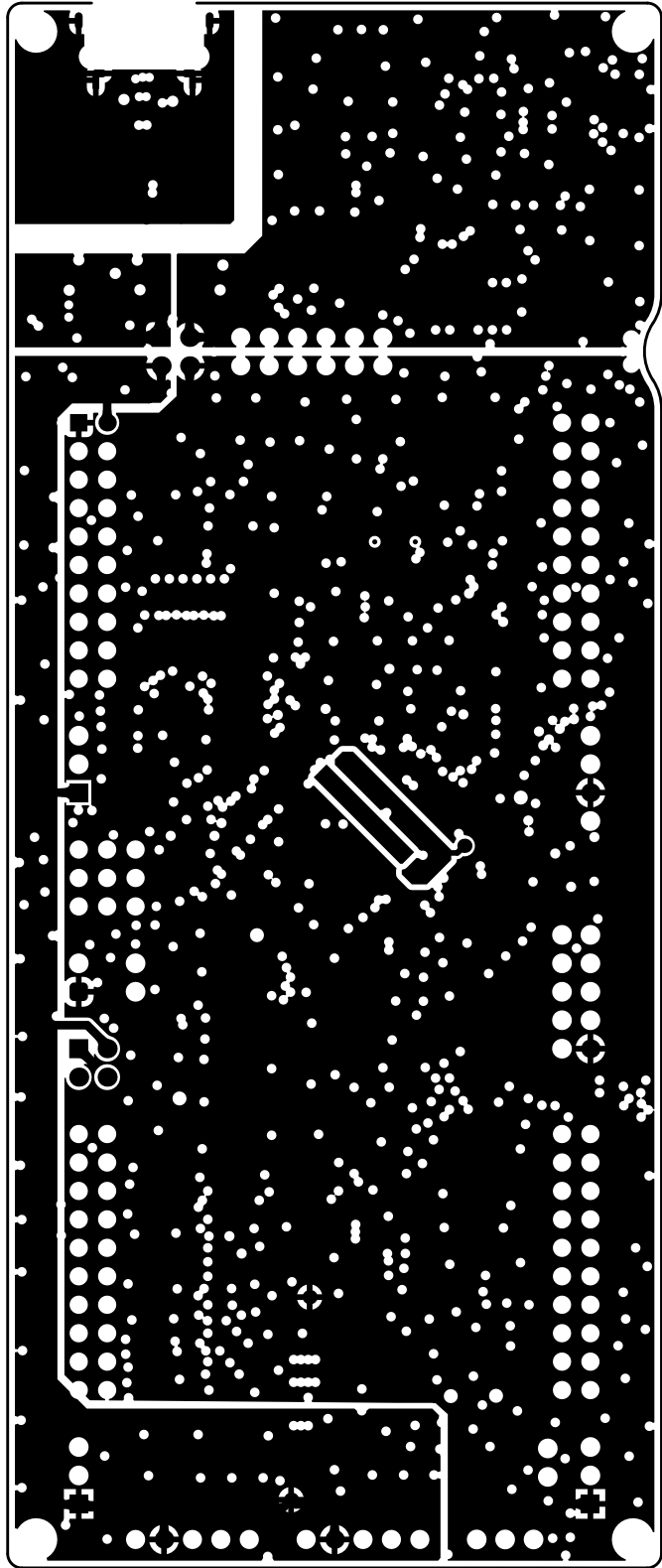


Top Signal

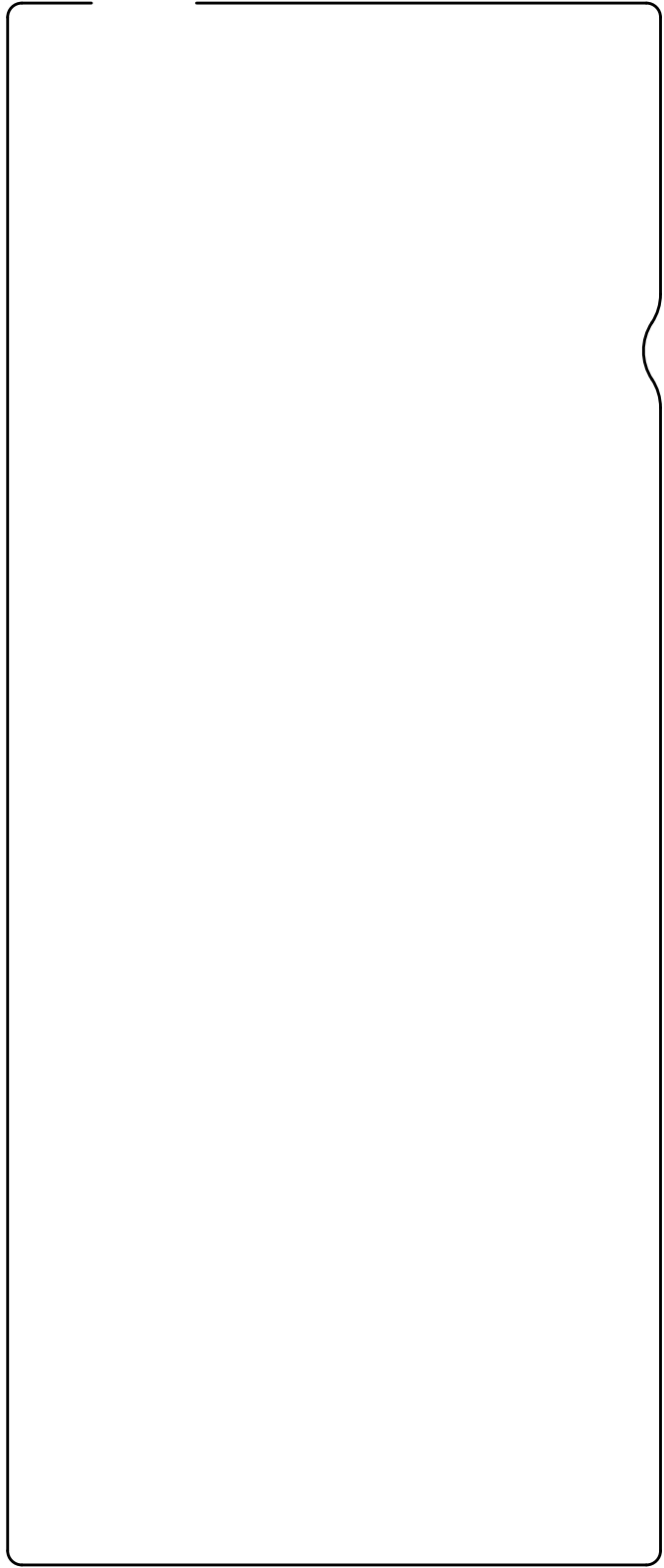


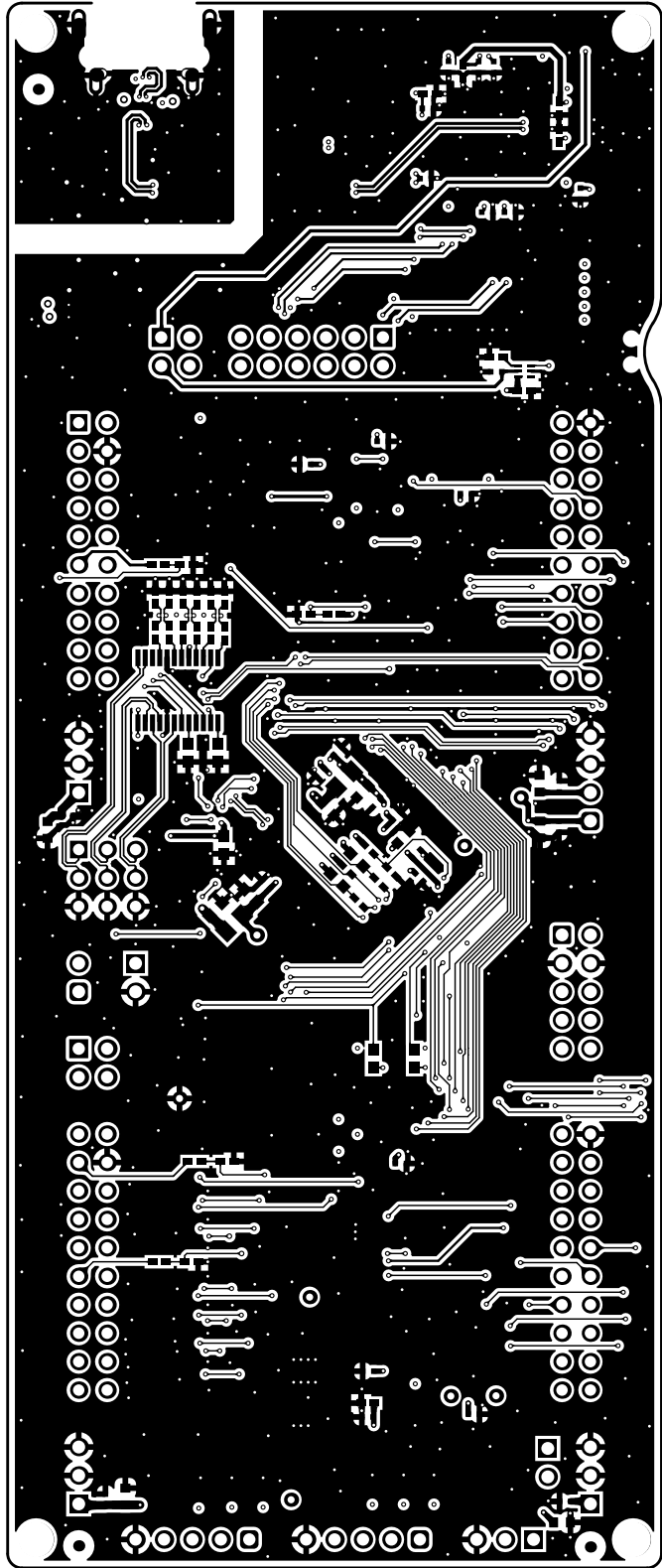


GND

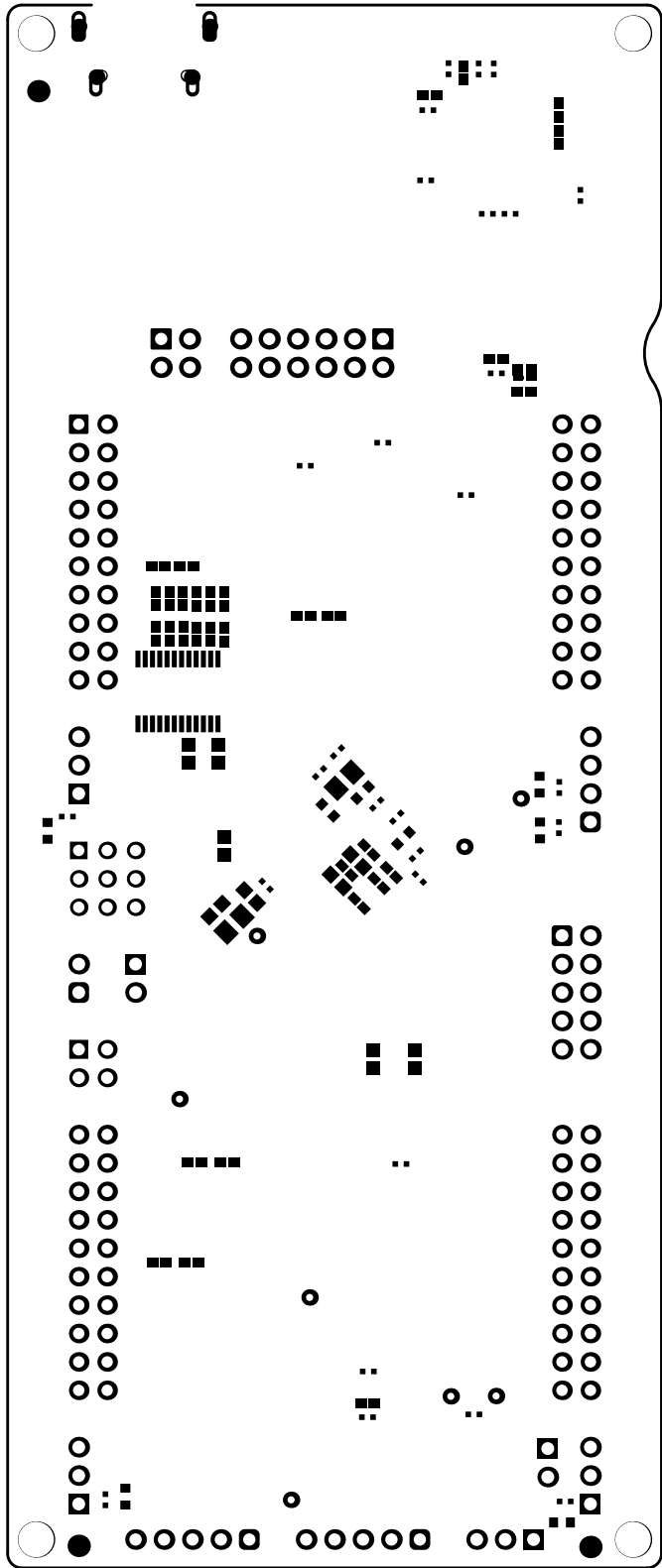


PWR

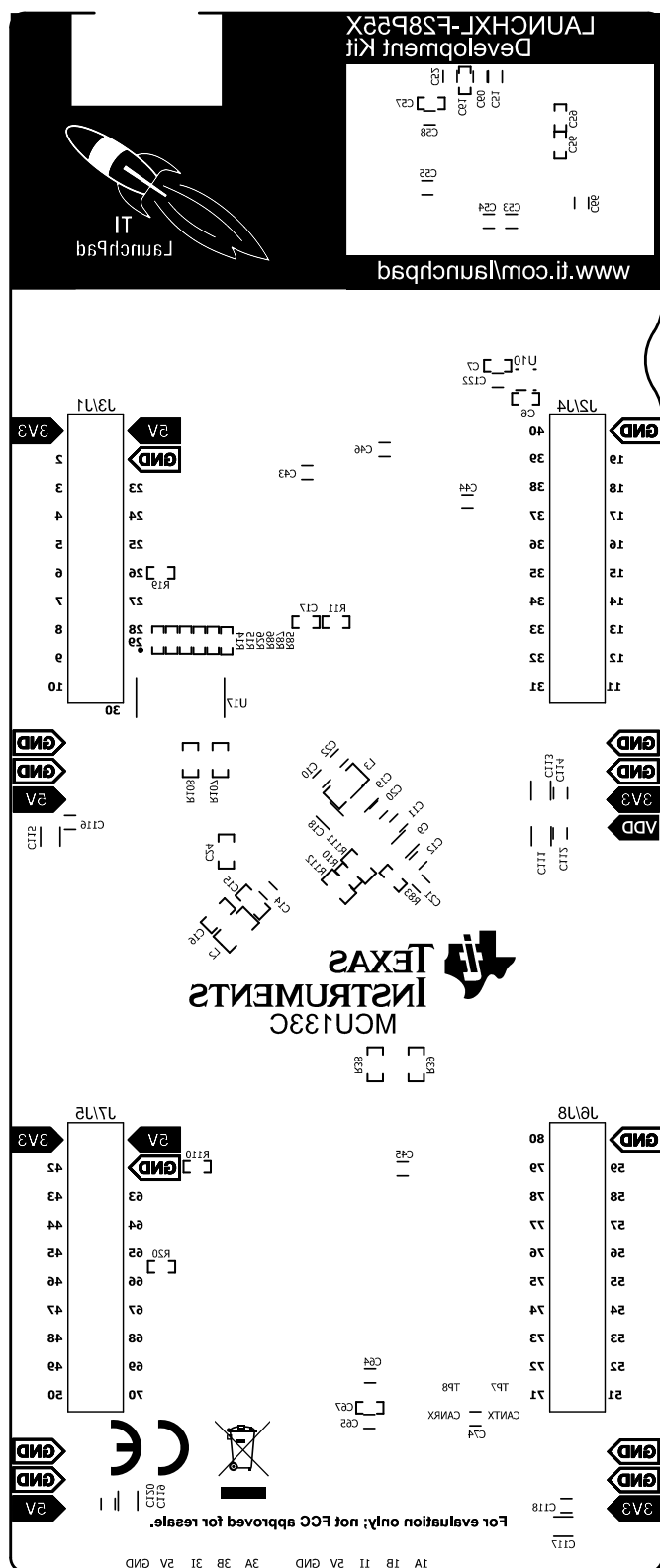


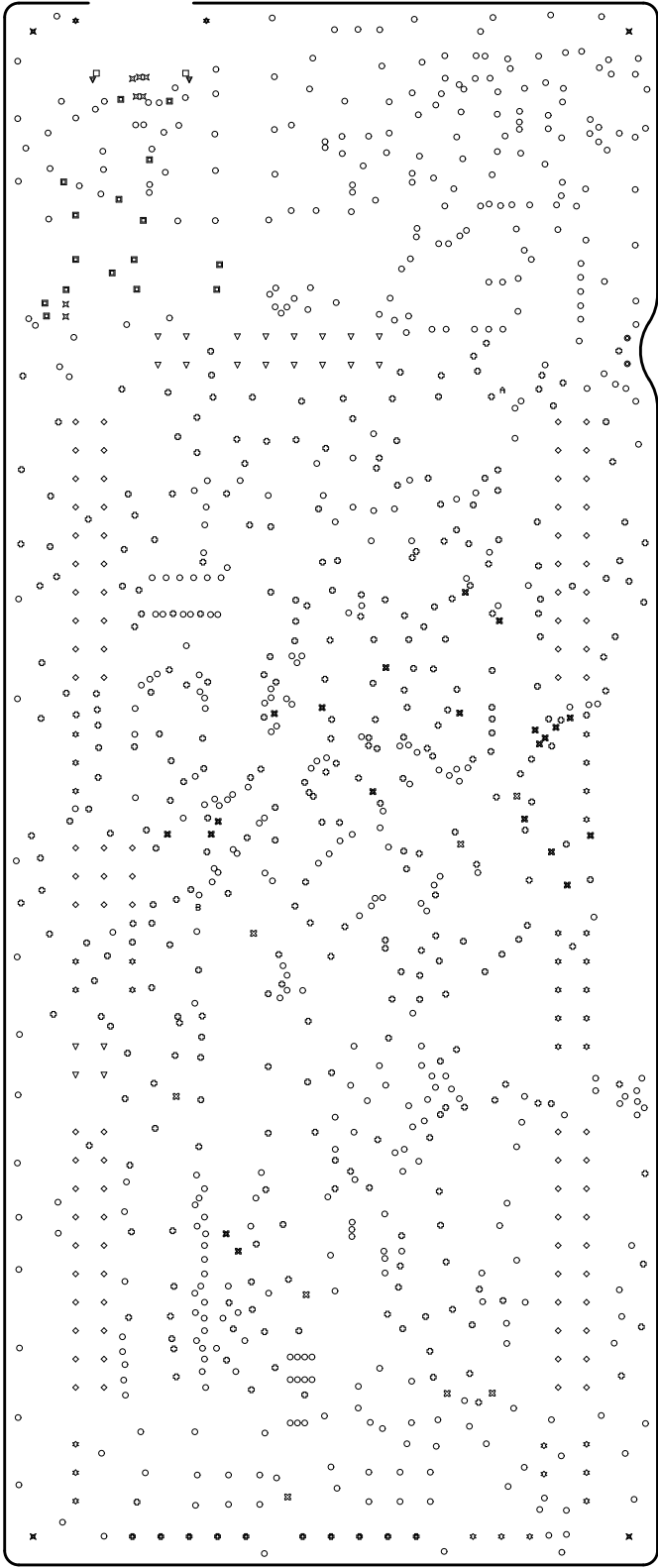


Bottom Signal



Bottom Solder

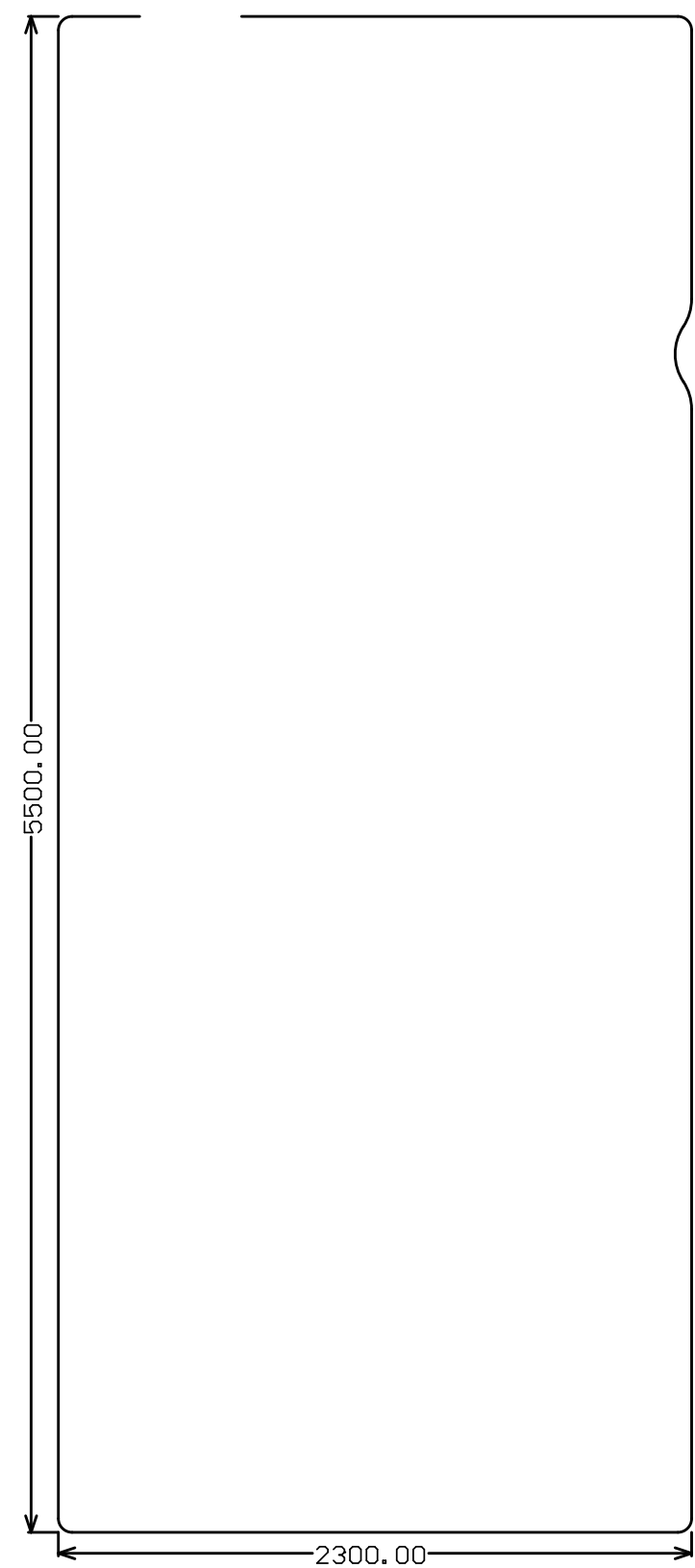




Drill Drawing

Symbol	Quantity	Finished Hole Size	Plated	Hole Type	Drill Layer Pair	Hole Tolerance
⊙	2	35.43mil (0.900mm)	NPTH	Round	Top Signal - Bottom Signal	+0.00mil
✕	4	125.00mil (3.175mm)	NPTH	Round	Top Signal - Bottom Signal	
✕	7	7.87mil (0.200mm)	PTH	Round	Top Signal - Bottom Signal	
⊕	325	9.84mil (0.250mm)	PTH	Round	Top Signal - Bottom Signal	
○	497	9.84mil (0.250mm)	PTH	Round	Top Signal - Bottom Signal	+0.00mil
✕	21	11.81mil (0.300mm)	PTH	Round	Top Signal - Bottom Signal	
A	1	11.81mil (0.300mm)	PTH	Round	Top Signal - Bottom Signal	
B	1	15.75mil (0.400mm)	PTH	Round	Top Signal - Bottom Signal	
⊕	16	15.75mil (0.400mm)	PTH	Round	Top Signal - Bottom Signal	±1.97mil
✕	8	25.00mil (0.635mm)	PTH	Round	Top Signal - Bottom Signal	
◇	89	40.16mil (1.020mm)	PTH	Round	Top Signal - Bottom Signal	
⊕	10	43.31mil (1.100mm)	PTH	Round	Top Signal - Bottom Signal	
▽	20	43.31mil (1.100mm)	PTH	Round	Top Signal - Bottom Signal	
☆	32	45.28mil (1.150mm)	PTH	Round	Top Signal - Bottom Signal	
□	2	27.56mil (0.700mm)	PTH	Slot	Top Signal - Bottom Signal	
☆	2	59.06mil (1.500mm)	PTH	Slot	Top Signal - Bottom Signal	
▽	2	74.80mil (1.900mm)	PTH	Slot	Top Signal - Bottom Signal	
	1039 Total					

Slot definitions : Routed Path Length = Calculated from tool start centre position to tool end centre position.
Hole Length = Routed Path Length + Tool Size = Slot length as defined in the PCB layout



M2 Board Dimensions